

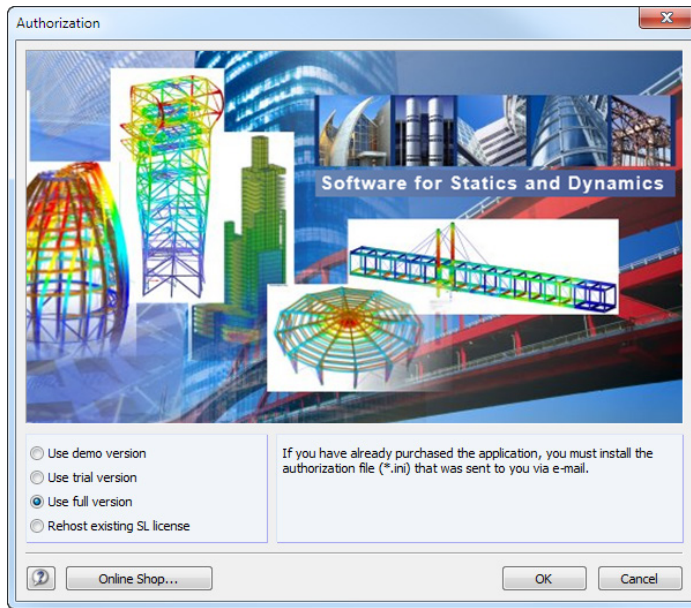
# Software Licensing

Another possibility to license RSTAB 8, RFEM 5, SHAPE-THIN 8 and RX-TIMBER 2 is to use software keys ("softlock license" SL). They are an alternative to the USB dongle (hardlock): The authorization depends on particular serial numbers of the hardware used in the computer. The full versions of RSTAB, RFEM, SHAPE-THIN and RX-TIMBER can then be started without a dongle on computers with registered hardware.

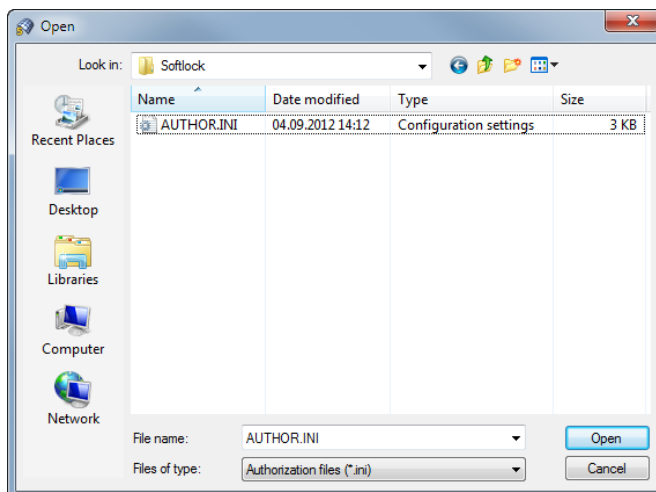
The software licensing requires a special *AUTHOR.INI* file that contains information about the product key. This authorization file can be requested from our sales department or downloaded from your account at [www.dlubal.com](http://www.dlubal.com).

## Activating the software license

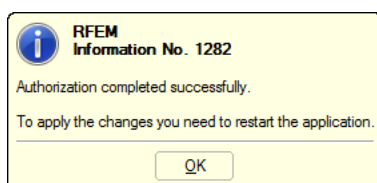
When you open the program for the first time without and no valid license is found, the *Authorization* dialog box appears.



Choose the option **Use full version** and click [OK]. The *Open* dialog box of Windows appears.



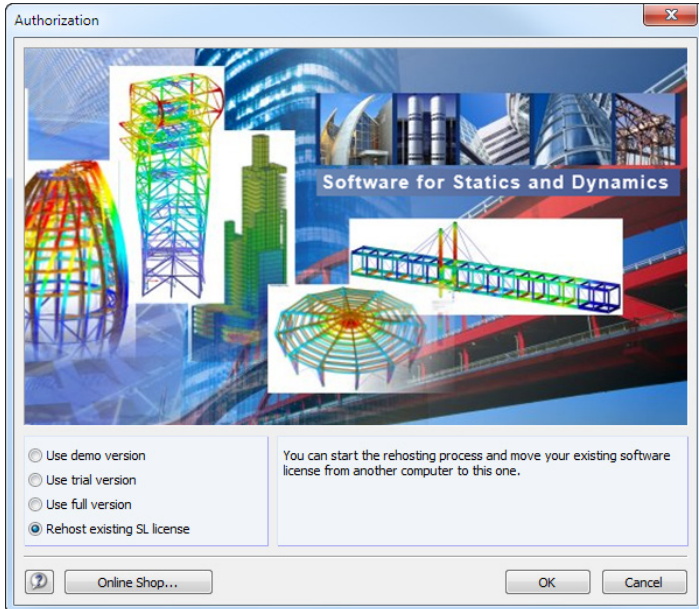
Set the directory to the *AUTHOR.INI* file and [Open] it. Make sure that you are connected to the Internet. If the authorization has been successfully imported, the following message appears:



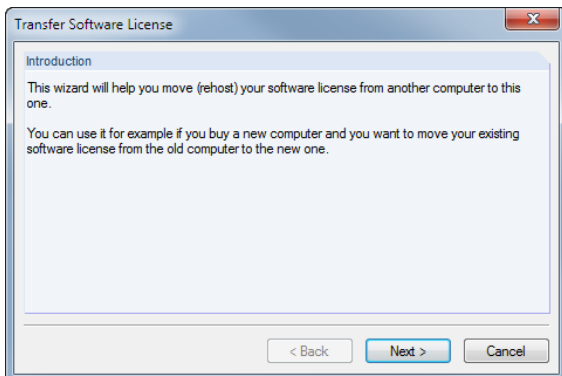
## Transferring the software license

The software key is connected to the hardware of the computer. When you change the computer, you can transfer the software license to the new computer. Follow the instructions below:

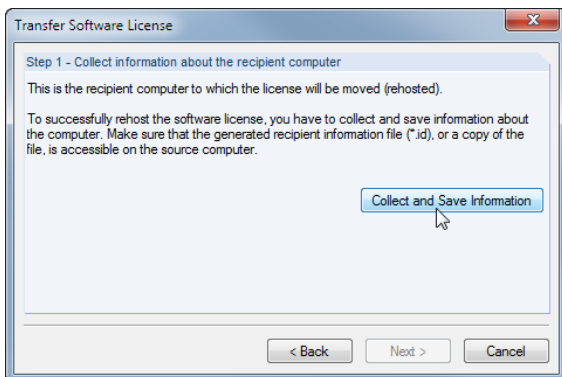
Start RSTAB or RFEM on the new computer to access the *Authorization* dialog box.



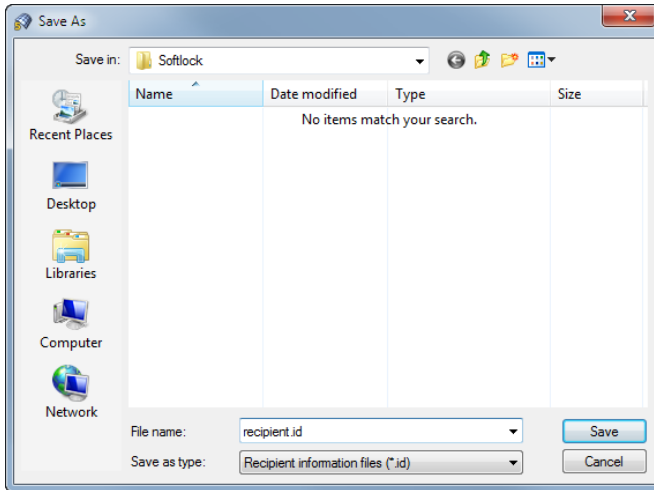
Choose the option **Rehost existing SL license**. A wizard appears, guiding you through the single steps.



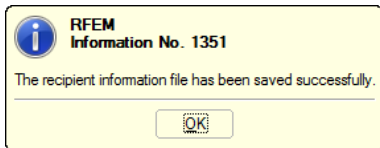
Click [Next >]. Then, click the button [Collect and Save Information].



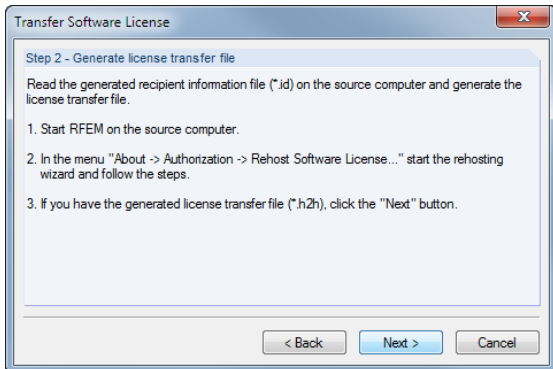
The *Save As* dialog box opens. Enter an appropriate storage location and name for the \*.id file.



Click [Save]. After saving the \*.id file the following message appears:



After clicking [OK] and [Next >] further instructions are displayed. The next steps must be taken on the old computer.

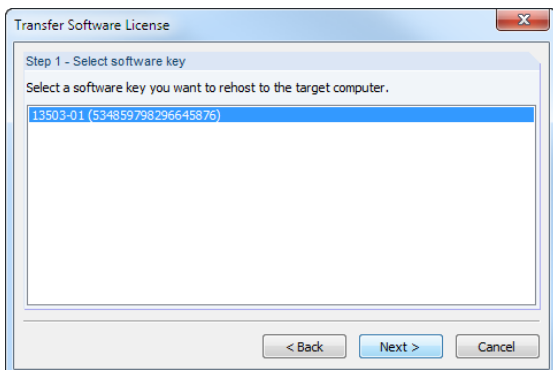


Leave the dialog box unchanged and go to the other computer where the software license still exists. Copy the \*.id file that you have just created to this computer.

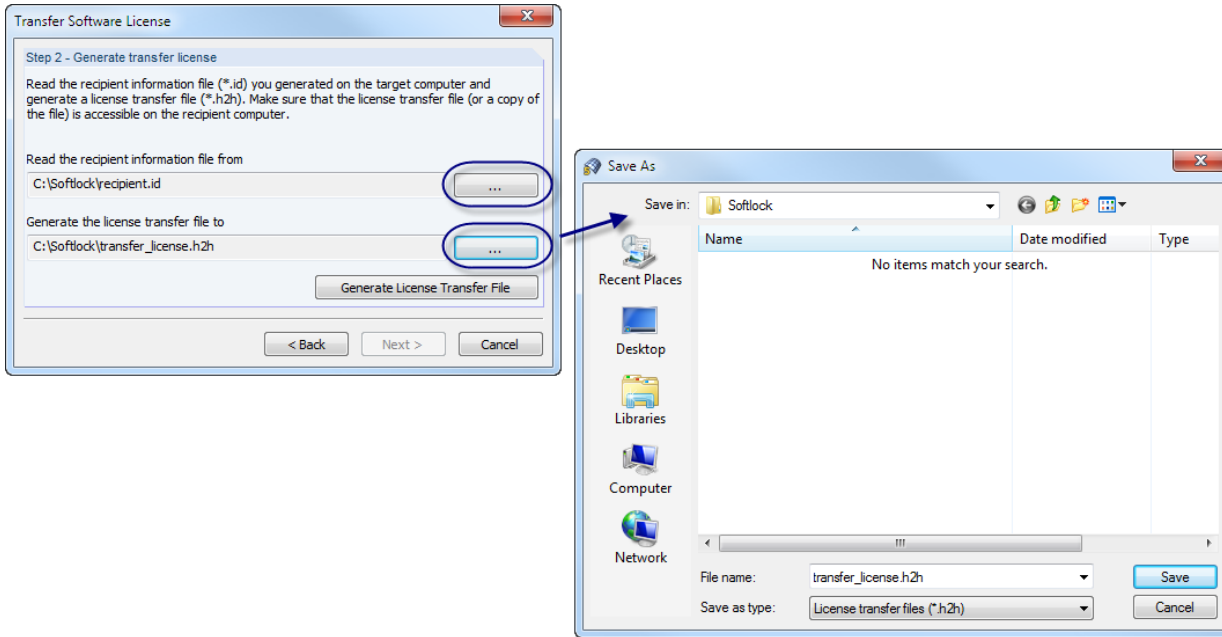
Start RSTAB or RFEM on the old computer.

Then, go to the menu **Help > Authorization > Rehost Software License**. The wizard appears again.

Click [Next >]. Then, in the following dialog box, select the software key that you want to transfer.



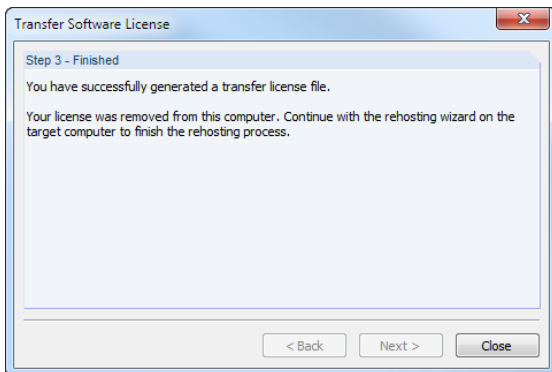
Click [Next >] to access the next dialog box where the transfer license is generated.



Use the first [...] button to set the path to the \*.id file that you have copied from the new computer.

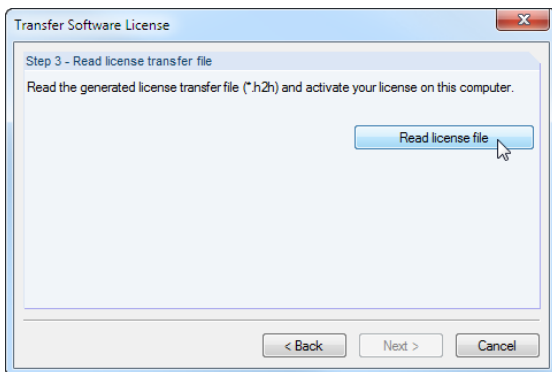
Then, use the second [...] button to specify a storage location and name for the \*.h2h file needed for the license transfer.

Finally, click the button [Generate License Transfer File]. Then, the following message appears.

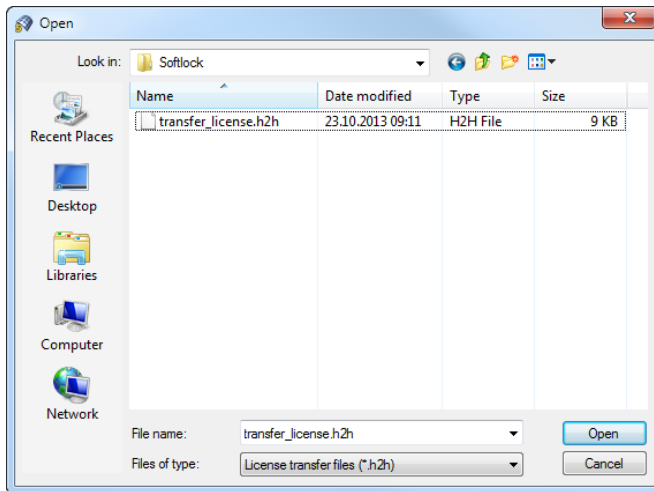


Now, go back to the new computer. Copy the just created \*.h2h file to this computer.

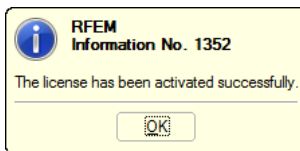
In the displayed *Step 2 - Generate license transfer file* (see previous page) click [Next >].



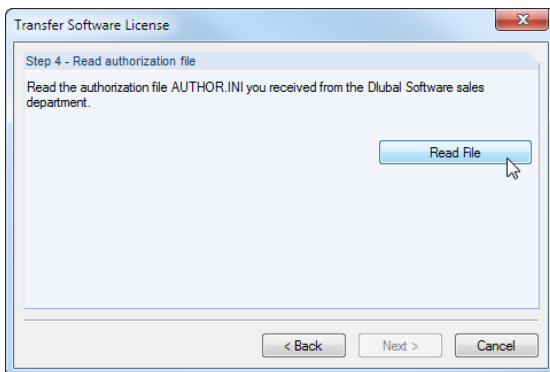
After a click on the button [Read license file] the *Open* dialog box appears. Set the directory of the file \*.h2h.



If the license transfer file has been successfully imported, the following message appears:

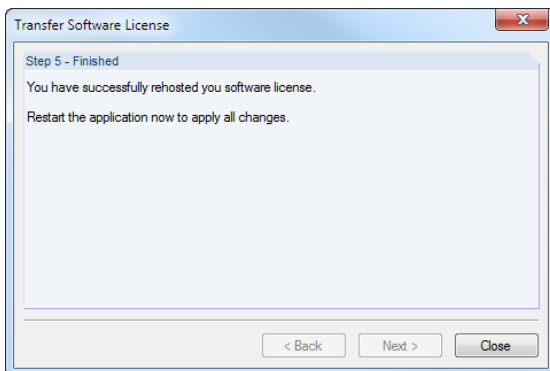


In the last step, you need to import the authorization file to the new computer.



After clicking the button [Read File] you are able to set the path of the *AUTHOR.INI* file in the *Open* dialog box (see picture on first page).

If the authorization file has been successfully imported, the wizard ends with the following message:



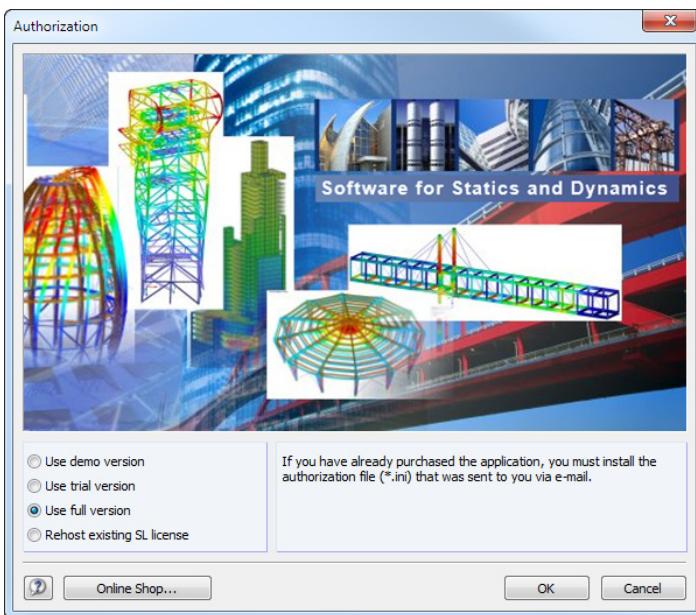
The software license is ready for operation after restarting the program on the new computer.

## Converting a dongle license to a software license

If a full version is already installed on the computer, it is not possible to activate the software license by simply importing the new authorization file: It is also necessary to register information about the computer hardware.

The *Authorization* dialog box (see below) will not be displayed anymore when starting a full version. However, activating a software license is only possible in this dialog box. Follow the instructions below:

- Open the Explorer and go to the Dlubal master data folder *C:\ProgramData\Dlubal\Global\General Data*.
- Delete the file *AUTHORE.INI*.
- Start RSTAB or RFEM.
- Select the option **Use full version** in the *Authorization* dialog box and click [OK]. In the following *Open* dialog box, you can then set your new *AUTHOR.INI* file. Make sure that you are connected to the Internet.



After restarting the program you can use RSTAB or RFEM without a dongle. Then, an Internet connection is no longer required. Please note that the software licenses are not available on virtual machines (VM) or computers with remote maintenance access.

If you have any problems operating DLUBAL applications as software licenses, please contact our technical support.

Your team from DLUBAL SOFTWARE GMBH